

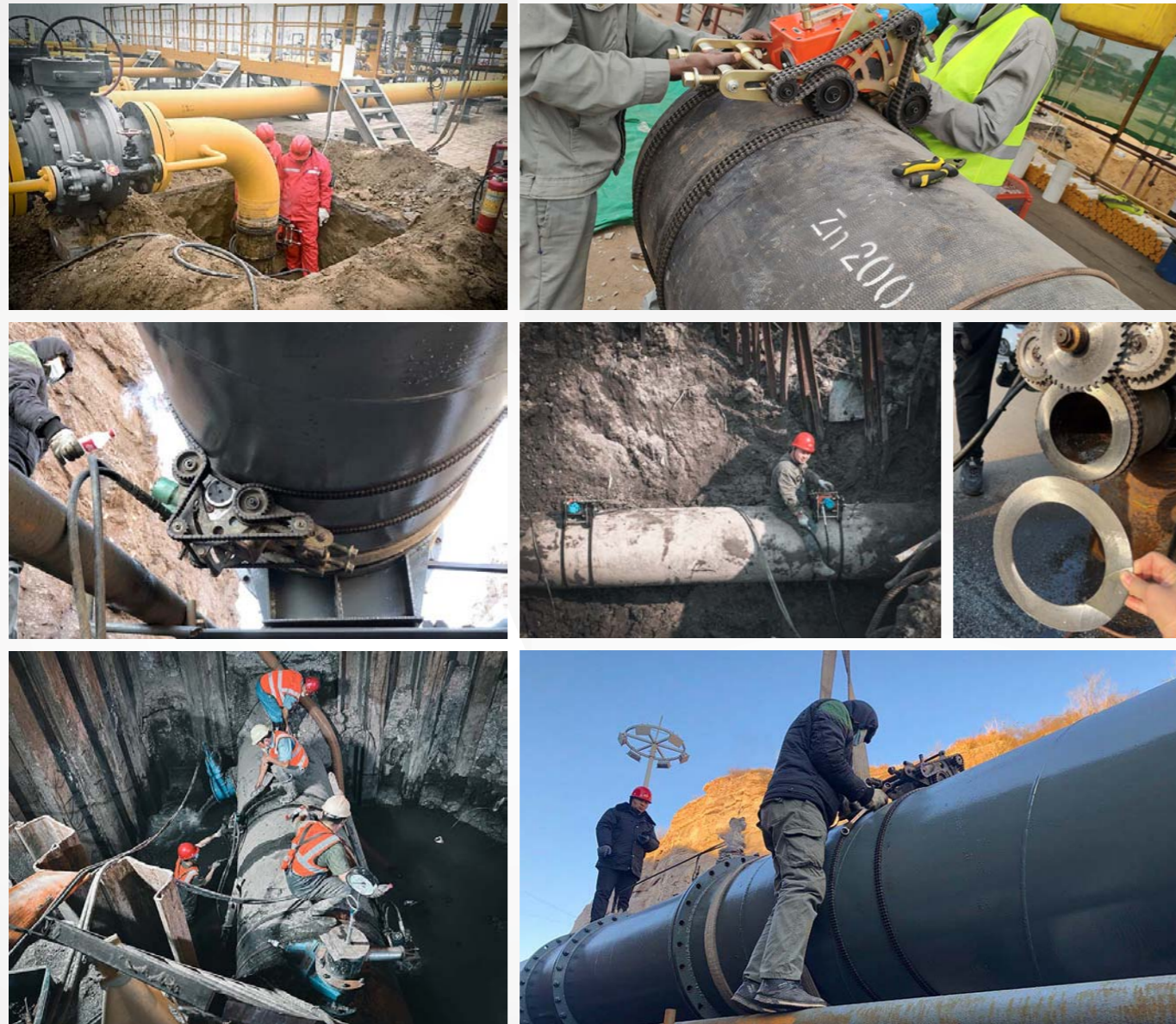
## Chain type Pipe Cutting Machine

Self-Propelled Pipe Cutting Machine / Hydraulic Power Pack

This portable chain type cold cutting machine is designed to cut and bevel simultaneously from 6in-160in O.D.(DN150-4000) on most pipe and vessel materials and schedules (optional drive chain sections required for different OD).

Secured by its mounting/drive chain, the cutter drives itself around the pipe as it machines, producing a weld ready surface. Driving around the circumference of the workpiece gives the cutter an advantage over other machine tool type - the ability to accommodate any workpiece diameter by simply adding/adjusting the mounting/drive chain length

Now in its fourth generation, the newly updated pipe cutters is reengineered with improved performance based on our 20 years' on site experience to make it more durable, more controllable, and more powerful.



## Self-Propelled Pipe Cutting Machine



The 4th generation

### Features

Accommodates 6in-160in OD( DN150-DN4000), depends on chain length

Performs cutting, or cutting and beveling simultaneously

Waterproof and oilproof

Easy to set up and operate

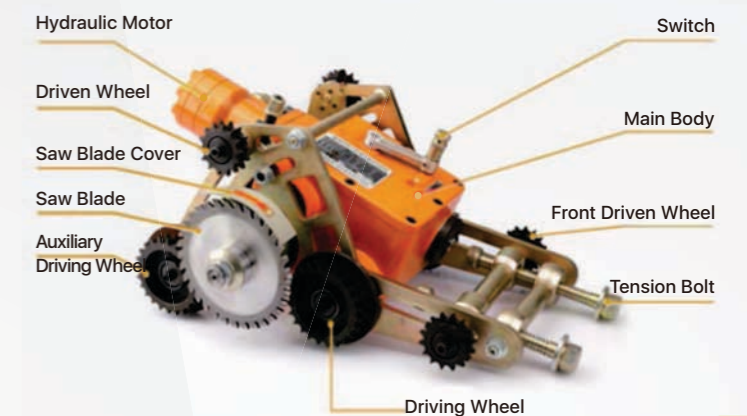
Horizontal and Vertical operation

Fast and accurate cuts

Compact, portable design

### Specification

Model	XF4000
Driven	Hydraulic motor
Output Torque	191N.m
Working Range	DN150-ND4000
One pass thickness	22-30mm depends on material
Max. Wall thickness	60mm depends on material
Cutting Speed	40-90mm/Min depends on material
Installation time	5-15Min.
Min. Space required	320mm
Overall size	560*420*320mm
Net Weight	37 KGS
Shipping Weight	52 KGS w/o Chain
Packing Size	580*430*340mm, Steel case



## Electric Hydraulic Power Pack

The hand-pushed frame structure is equipped with 2 wheels for easy movement. The power mode adopts durable motor, equipped with instrument display panel, hydraulic pressure display instrument, hydraulic valve control rod, pressure gauge switch device. The motor is driven by elastic coupling. Suitable for workplaces without explosion-proof requirements.



### Specifications

Model	XF-10
Power Supply	380-415V 3PH 50/60HZ
Cable Length	10M
Rated Pressure	10Mpa
Motor Power	7.5Kw
Motor Model	YE3-132S2-2-7.5-B35
IDLE Speed	3600 RPM
Rated Flow	35L/Min
Oil pump displacement	12ml/r
Tank Capacity	15L
Hydraulic hose length	10M c/w G1/2 quick couple
Cooling	Air
Operating temperature	-15°C - 45°C
Altitude	<1000M
Overall Size	820*580*600mm
Net Weight	135 KGS
Shipping Weight	190 KGS
Packing Size	840*620*700mm, plywood case

## EX.Hydraulic Power Pack

The hand-pushed frame structure is equipped with 2 wheels for easy movement. The power mode adopts explosion-proof motor, equipped with instrument display panel, hydraulic pressure display instrument, hydraulic valve control rod, pressure gauge switch device. The motor is driven by elastic coupling, and the external parts of explosion-proof shell are connected firmly and reliably.



### Specification

Model	XF-10EX
Power Supply	380-415V 3PH 50/60HZ
Cable Length	10M
Rated Pressure	10Mpa
Motor Power	7.5Kw
Motor Model	YBX3-132S2
Explosion-proof Marking	EX db II B T4 Gb
Enclosure protection class	IP55
IDLE Speed	2900 RPM
Rated Flow	35L/Min
Oil pump displacement	12ml/r
Tank Capacity	15L
Hydraulic hose length	10M c/w G1/2 quick couple
Cooling	Air
Operating temperature	-15°C - 45°C
Altitude	<1000M
Overall Size	850*620*610mm
Net Weight	120 KGS
Shipping Weight	170 KGS
Packing Size	880*630*750mm, plywood case

## Diesel Hydraulic Power Pack

Specially designed and manufactured for field construction without power supply. The hand-pushed frame structure is equipped with 2 wheels for easy movement. Equipped with instrument display panel, hydraulic pressure display instrument, hydraulic valve control rod, pressure gauge switch device.



### Specifications

Model	XF-10D
Driven	Diesel engine
Rated Pressure	10Mpa
Engine Power	8.6Kw
Engine Model	188FA
Diesel Tank Capacity	4.8L
Diesel	0#, -10#
VRLA Battery	6-23, 12V23Ah@3hr rate
IDLE Speed	3600 RPM
Rated Flow	35L/Min
Oil pump displacement	12ml/r
Hydraulic hose length	10M c/w G1/2 quick couple
Cooling	Air
Operating temperature	-15°C - 45°C
Altitude	<1000M
Overall Size	780*580*620mm
Net Weight	104 KGS
Shipping Weight	156 KGS
Packing Size	800*600*700mm, plywood case

## Carbide-Tipped Cutting Saw Blade



Part No.	Size	Features	Application
DP160532	160*5mm	Low vibration, Non-stick, High wear resistance	HDPE, Ductile cast iron, carbon steel pipe
DP200536	200*5mm		
DP220540	220*5mm		
DX160532	160*5mm	High speed High tenacity Low noise Warm up slowly	HDPE, Ductile cast iron, carbon steel pipe Stainless steel, alloy steel pipe
DX200536	200*5mm		
DX220540	220*5mm		

## Carbide-Tipped Beveling Saw Blade



Part No.	Size	Description	Application
DP12520B45	125*20	45 Deg. Beveling Tool	Ductile cast iron, carbon steel pipe Use with 160*5mm cutting saw blade Maximum thickness 22mm
DP12520B72	125*20	72 Deg. Beveling Tool	
DX12520B45	125*20	45 Deg. Beveling Tool	Stainless steel, alloy steel pipe Use with 160*5mm cutting saw blade Maximum thickness 22mm
DX12520B72	125*20	72 Deg. Beveling Tool	
DX17520CB30	175*20	Cutting and RH& LH 30 Deg. Beveling combined	Ductile cast iron, carbon steel, Stainless steel, alloy steel pipe Finish cutting, RH & LH beveling in one time Maximum thickness 12mm